

IDENTITY SMARTCARD ORIENTED PLATFORM (ISOP)

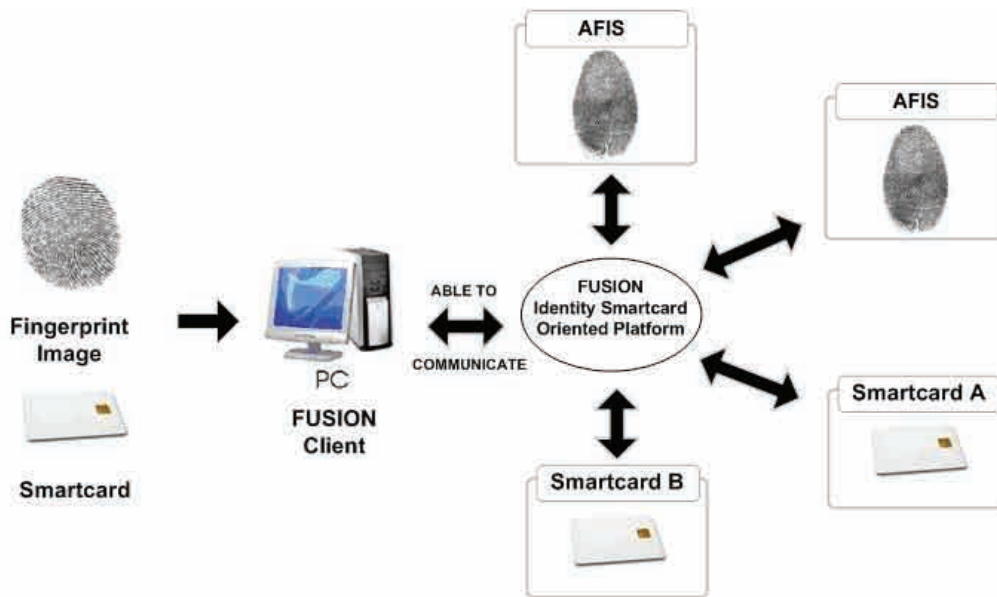
FUSION is a suite of software components making up a development framework that acts as message broker between customers' back-office applications and various smartcard and biometric devices. FUSION is Tricubes middleware platform that provides a unified infrastructure to enable the implementation of applications based on the usage of smartcard and biometrics.

The unique feature of FUSION is that it mitigates the dependency on card manufacturers, card applet and biometrics vendors. This is done by leveraging on Global Platform for smart cards and biometric, thus reduces the implementation impact on the readers.

- Non-dependant to a single biometric Automated Fingerprint Identification System (AFIS) vendor.
- Protection of government investment in different systems.
- Saving to government and it is based on open platform.
- Allows government the flexibility to select the best technology in terms of biometrics, smartcard or barcode.
- Government can establish a standard interface for differing fingerprint biometric and smart card technologies.
- It will allow sharing between different Automated Fingerprint Information System (AFIS) database.

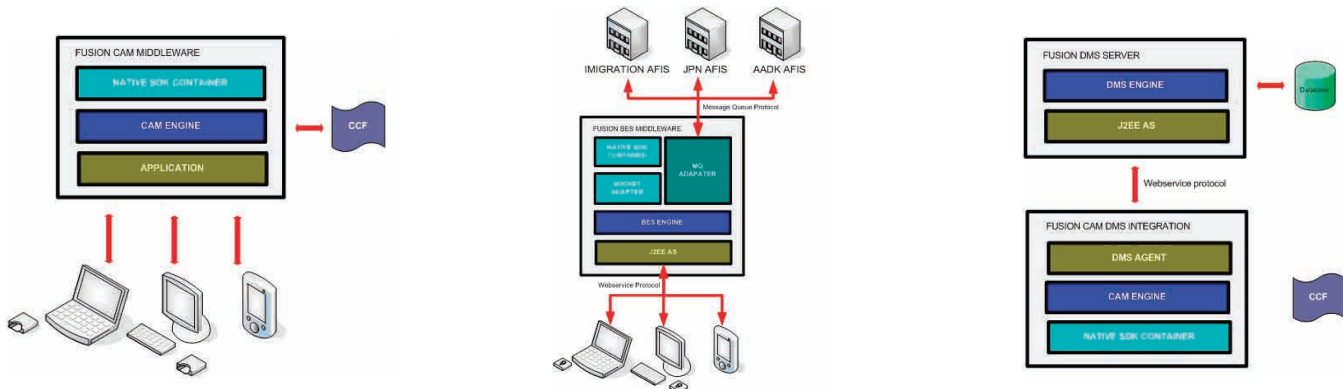


Fusion ISOP: Solution Flow



Fusion Core Modules

FUSION comprise of 3 major modules which is Card Access Module (CAM), Biometric Exchange System (BES) and Device Management Module (DMS).



Card Access Middleware (CAM)

Card Access Middleware is a Software Development Kit (SDK) for applications to run on PC/Mobile devices that have a smartcard reader attached for accessing information on variation of smartcard by providing a sets of high level Application Development Kit (SDK), it is easily integrated to any existing system (OS independent).

CAM Core features are as below:

- CAM SDK is capable to handle different devices type as well the different cards OS using one configuration file
- Easy adoption any future changes for device APDUs and cards OS API.

Biometric Exchange Module (BES)

The Biometric Exchange System (BES) is a system that enables 2 or more different biometric technology to do cross validation between one another. Powered by a customized biometric engine, the system is able to adopt future biometric algorithm without the need to change existing system that has already been implemented.

System support validation 1 to 1 validation as well as 1 to Many search validation (able to connect to AFIS system)

BES core features are as below:

- Cross validation between different biometric algorithm used by AFIS implementers
- Bringing the 'inside hardware validation' into enterprise for 1 to 1 validation

Device Management System (DMS)

The Device Management System (DMS) is a management system that does asset management (desktop & mobile), license validation and updates patches/releases of CAM module. A central DMS system allows for remote updates and patches to all connected CAM clients and it is platform independent (can run under Windows or Linux environment).

DMS core features are as below:

- Device Management System with AES cryptography implementation
- Full support for automated pull and push over the air patches



For more information visit us at:

<http://www.tricubes.com>

Tricubes continually improves products as new technologies and components become available. Tricubes therefore reserves the right to change specifications without prior notice. All features, functions and operations described herein may not be marketed in all parts of the world. Please email us for the latest product information at info@tricubes.com.

HEAD OFFICE
Tricubes Berhad
Suite 13.1, Level 13, Menara Great Eastern,
303 Jalan Ampang, 50450 Kuala Lumpur, Malaysia.

Phone: +603. 4264. 4000 Fax: + 603. 4264. 4100

© 2010 tricubes. All rights reserved.